

QUANTITY TAKEOFF SHEET:

Girder-Slab System

Project: **Illinois Condo 2004**
 Location: **Illinois**
 Client:

Date: **2004**
 SSC Advisor: **Steel Solutions Center**
 Client Contact:

Suspended Floor Areas:

284,050 ft²

Steel Quantities:

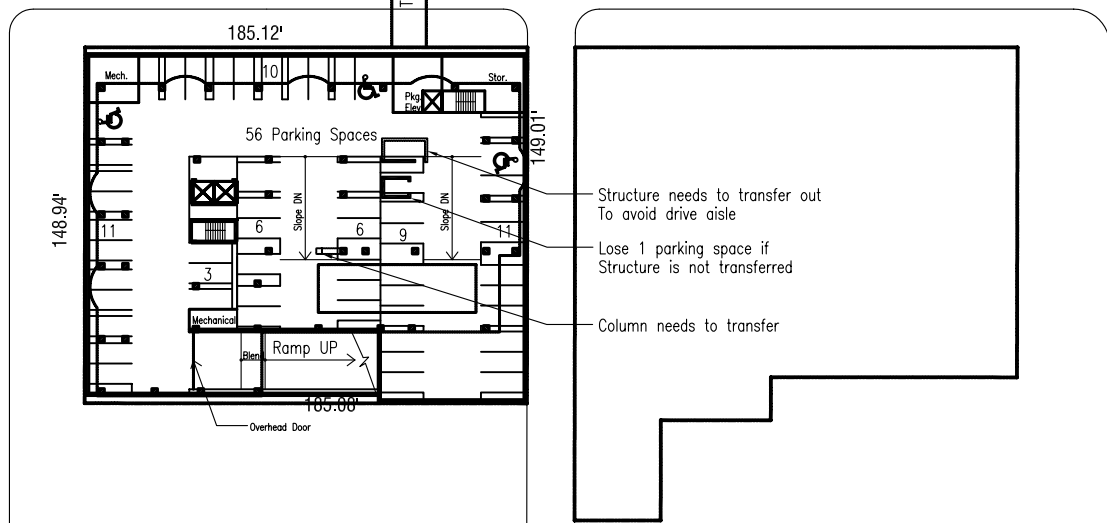
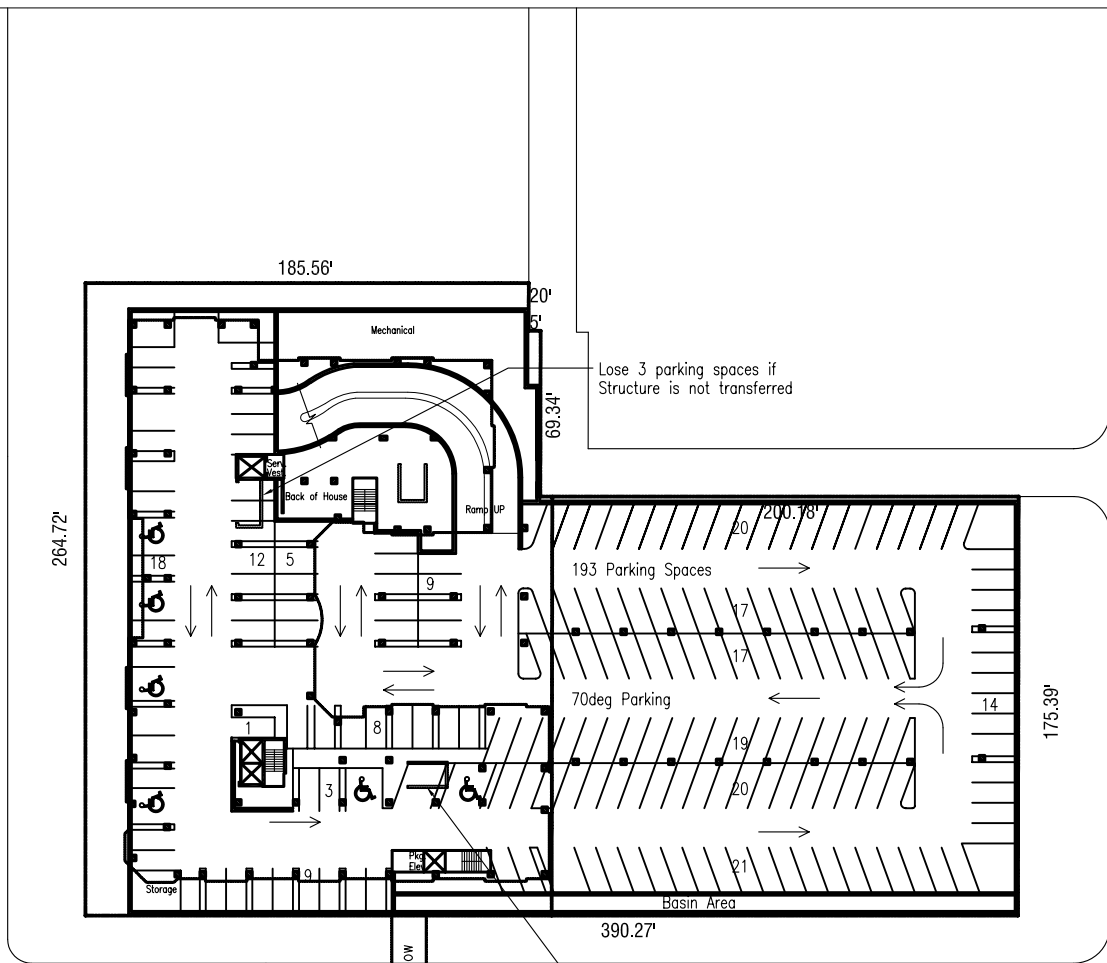
Gravity Columns				
W12's	173.5 tons	1.22 psf	459 pieces	
Beams (gravity)				
Wide Flange	245.5 tons	1.73 psf	752 pieces	
D-Beams	122.0 tons	0.86 psf	387 pieces	
Lateral Columns				
W12's	57.5 tons	0.40 psf	55 pieces	
Lateral Beams				
Wide Flange	18.2 tons	0.13 psf	80 pieces	
Braces	27.0 tons	0.19 psf	130 pieces	
Miscellaneous	10% 64 tons	0.45 psf		
	708 tons	5.0 psf	1863 pieces	

* The quantities are based on centerline dimensions

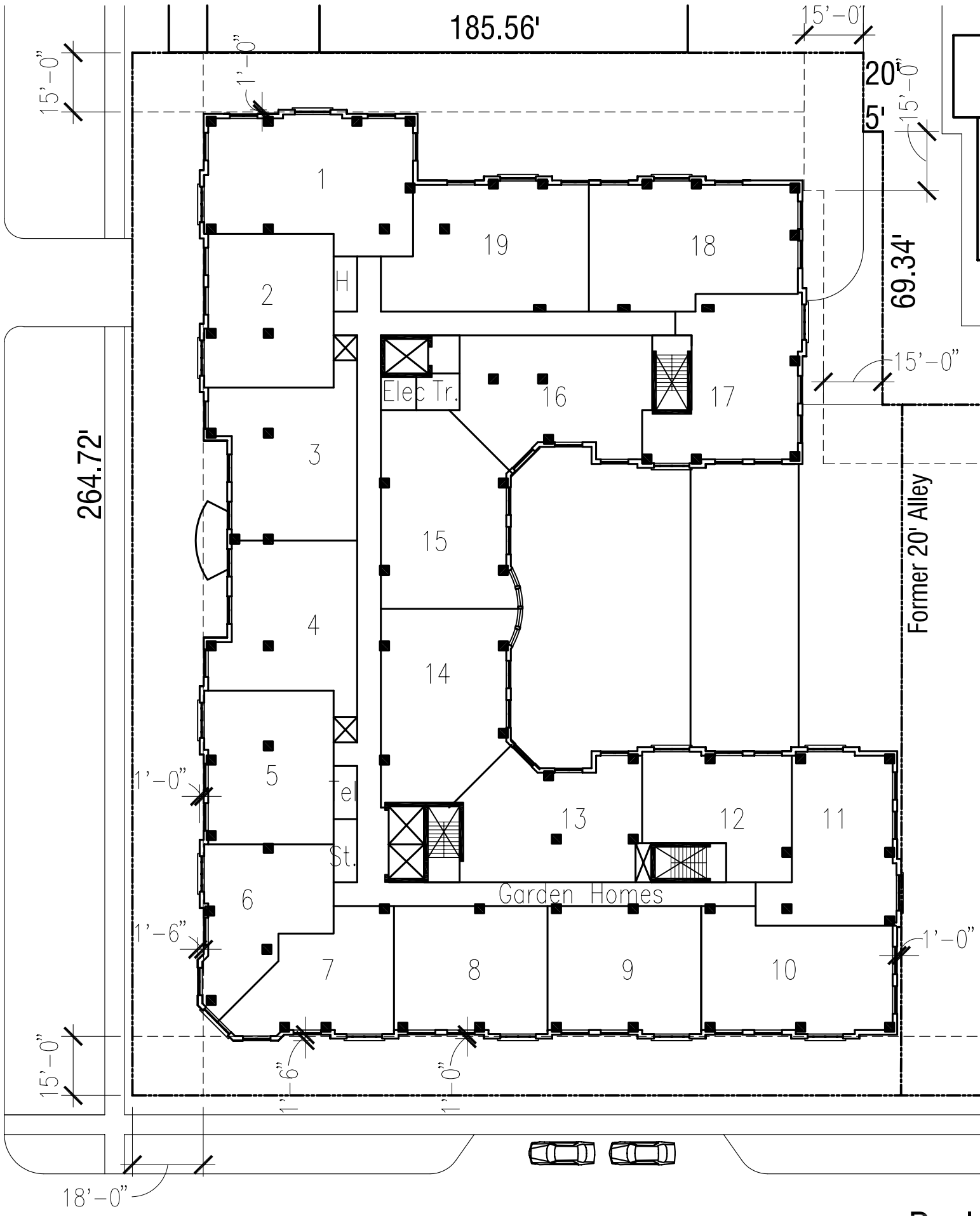
** Miscellaneous steel accounts for framing not included in the model, such as framing for openings. It does not include connection material or slab edge material.



This document has been prepared in accordance with information made available to the American Institute of Steel Construction, Inc., AISC Marketing, LLC, and the Steel Solutions Center, LLC at the time of its preparation. While it is believed to be accurate, it has not been prepared for conventional use as an engineering or construction document and should not be used or relied upon for any specific application without competent professional examination and verification of its accuracy, suitability and applicability by a licensed engineer, architect or other professional. AISC, AISCM, and SSC disclaim any liability arising from information provided by others or from the unauthorized use of the information contained in this document.



Basement
Base Scheme



185.56'

264.72'

69.34'

Former 20' Alley

Garden Homes

1

2

3

4

5

6

7

15

14

8

19

16

13

9

18

17

12

10

11

15'-0"

1'-0"

15'-0"

20'-0"

5'

15'-0"

15'-0"

1'-0"

1'-6"

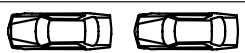
15'-0"

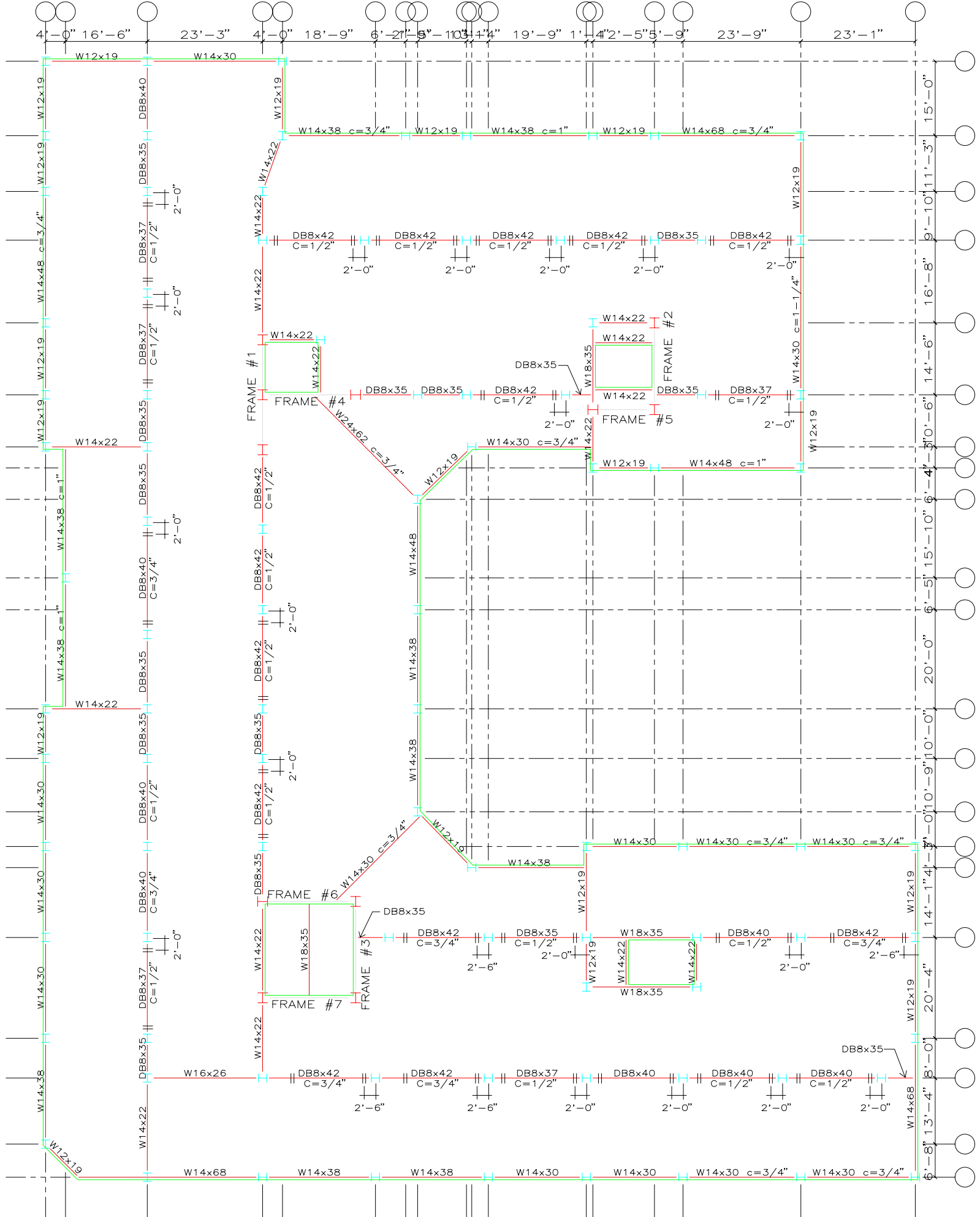
1'-6"

1'-0"

1'-0"

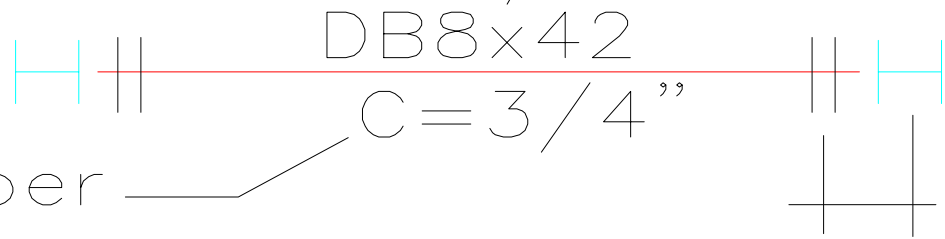
18'-0"





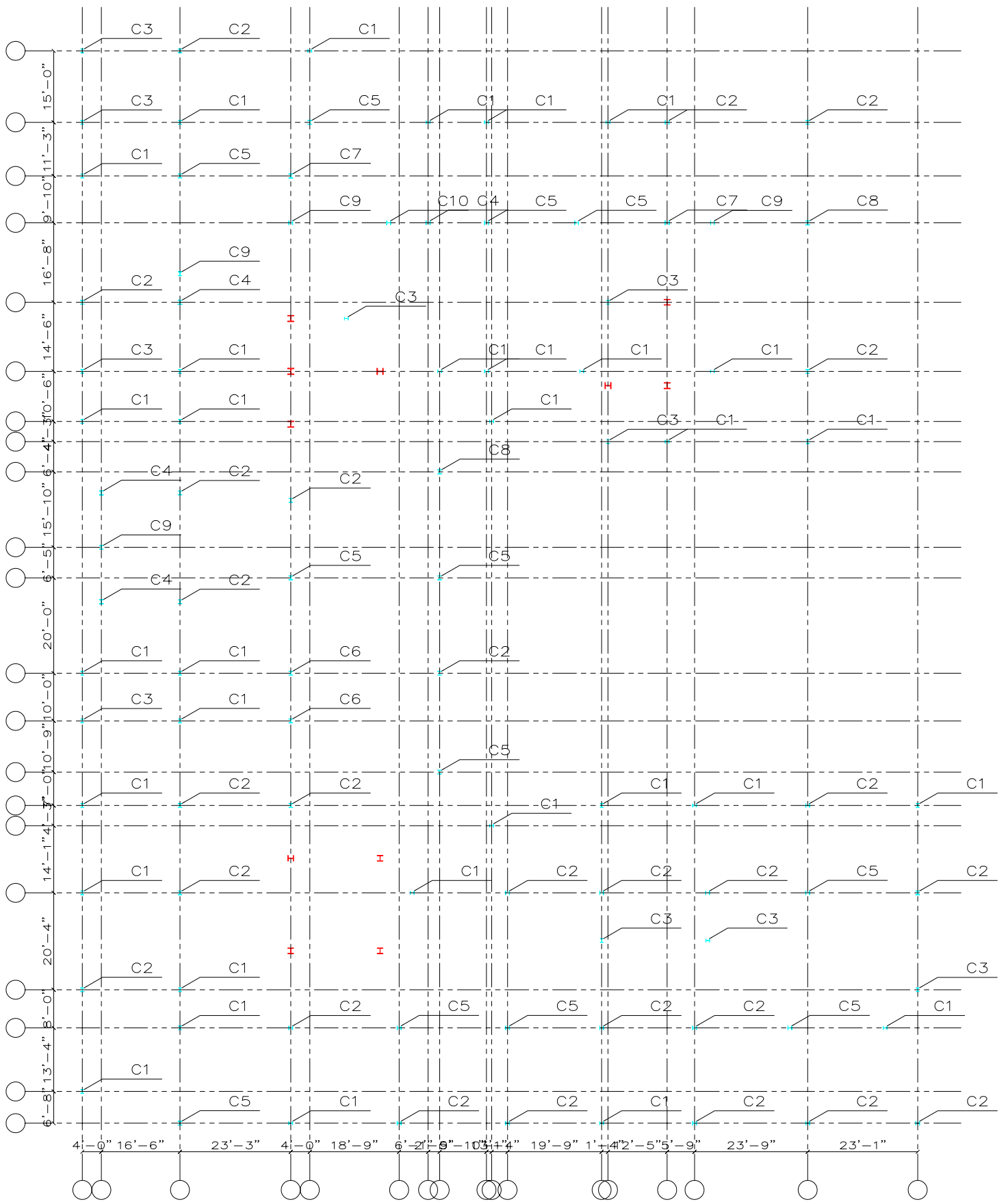
TYPICAL LEVEL FRAMING

D-Beam Size



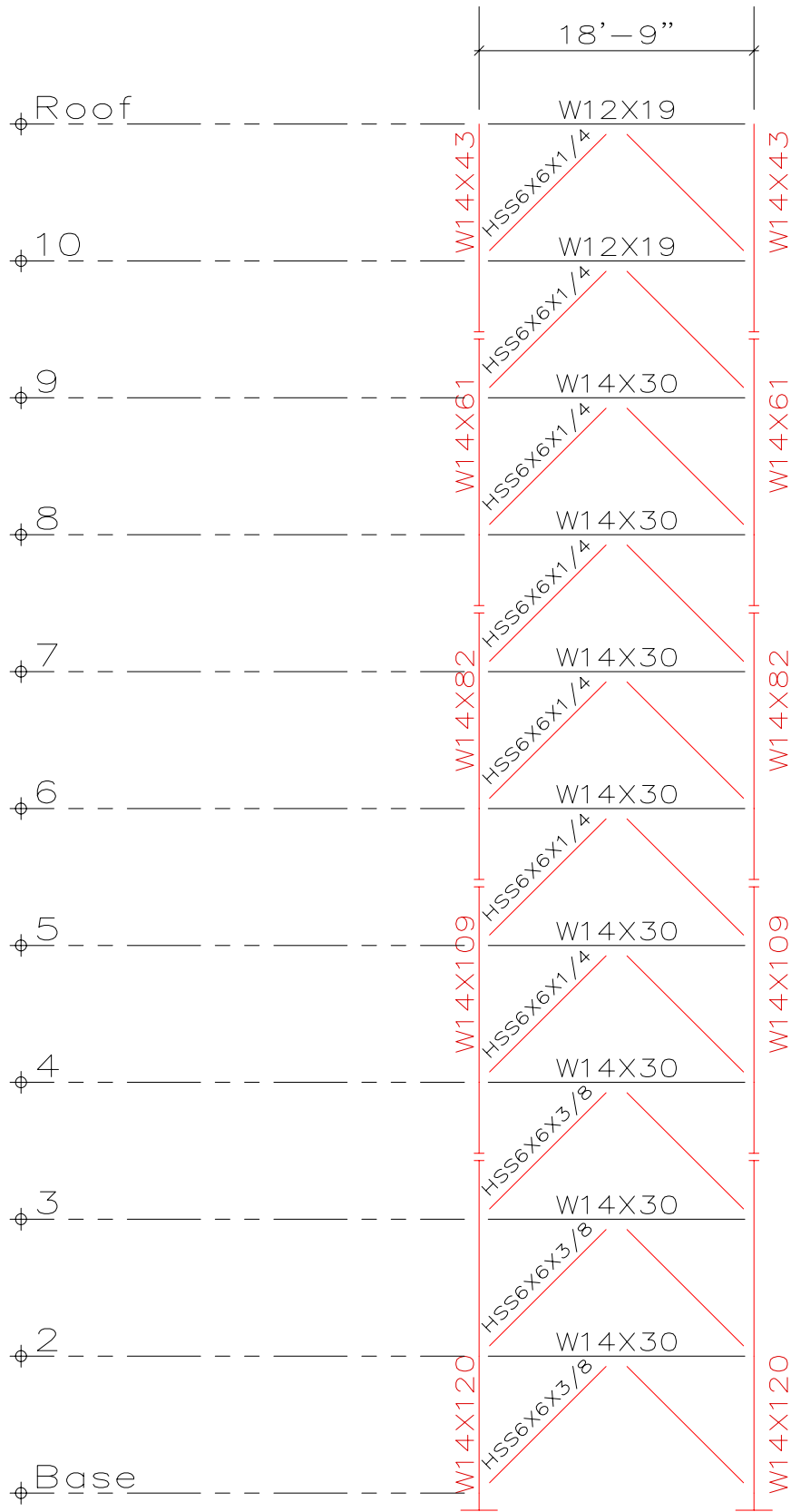
Camber

Column Tree Required
of length indicated $2' - 6''$

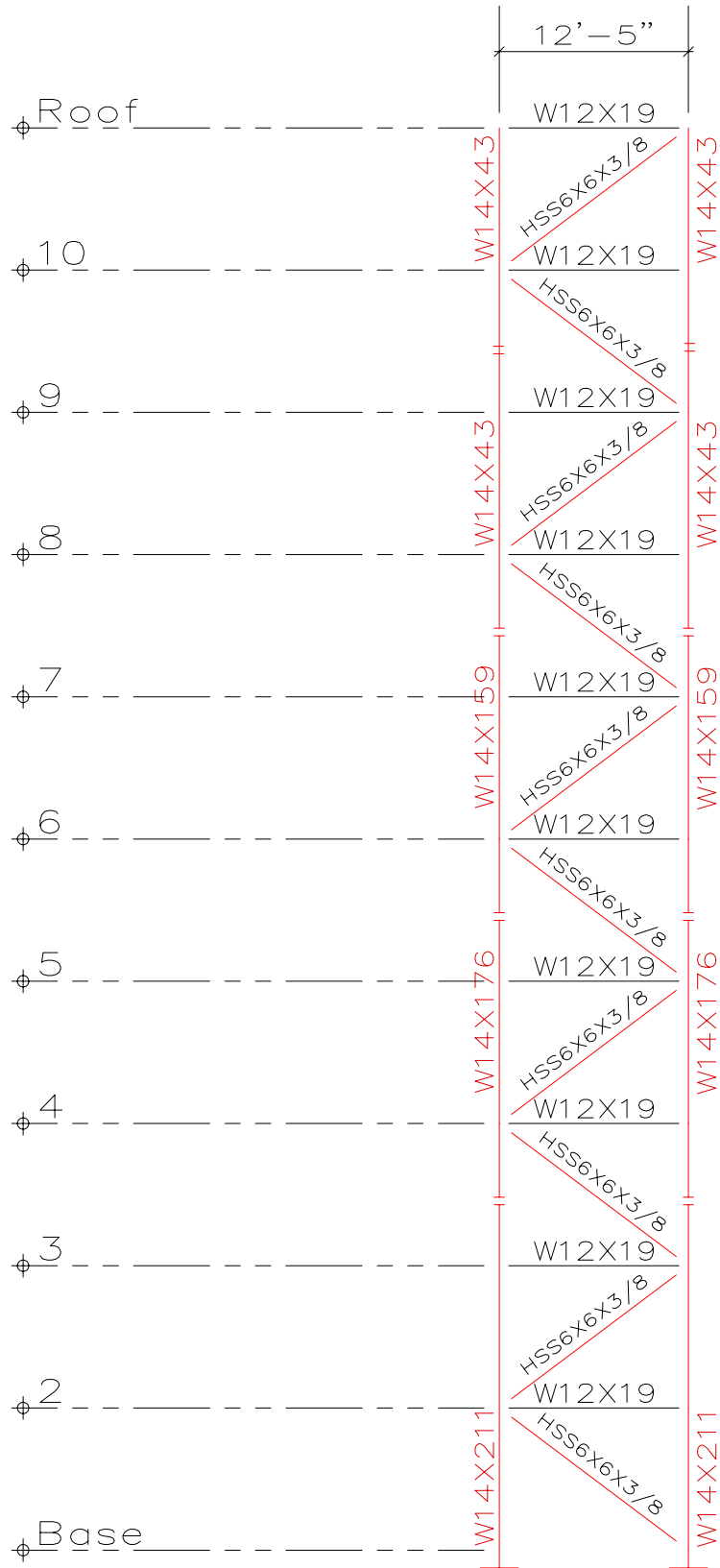


COLUMN LAYOUT

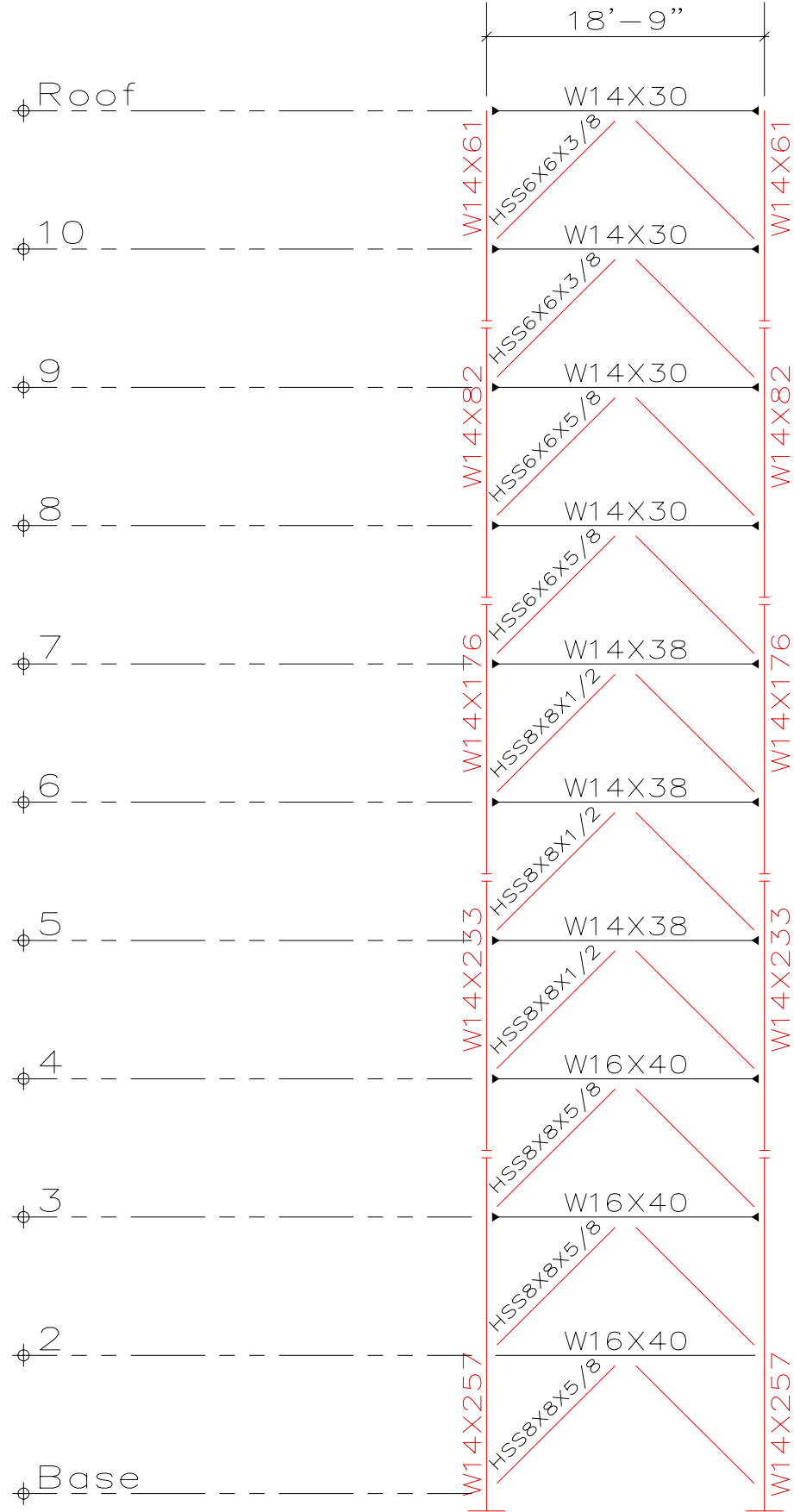
SCALE: $1/8'' = 1'$



FRAME #6
 SCALE: 1/8" = 1'

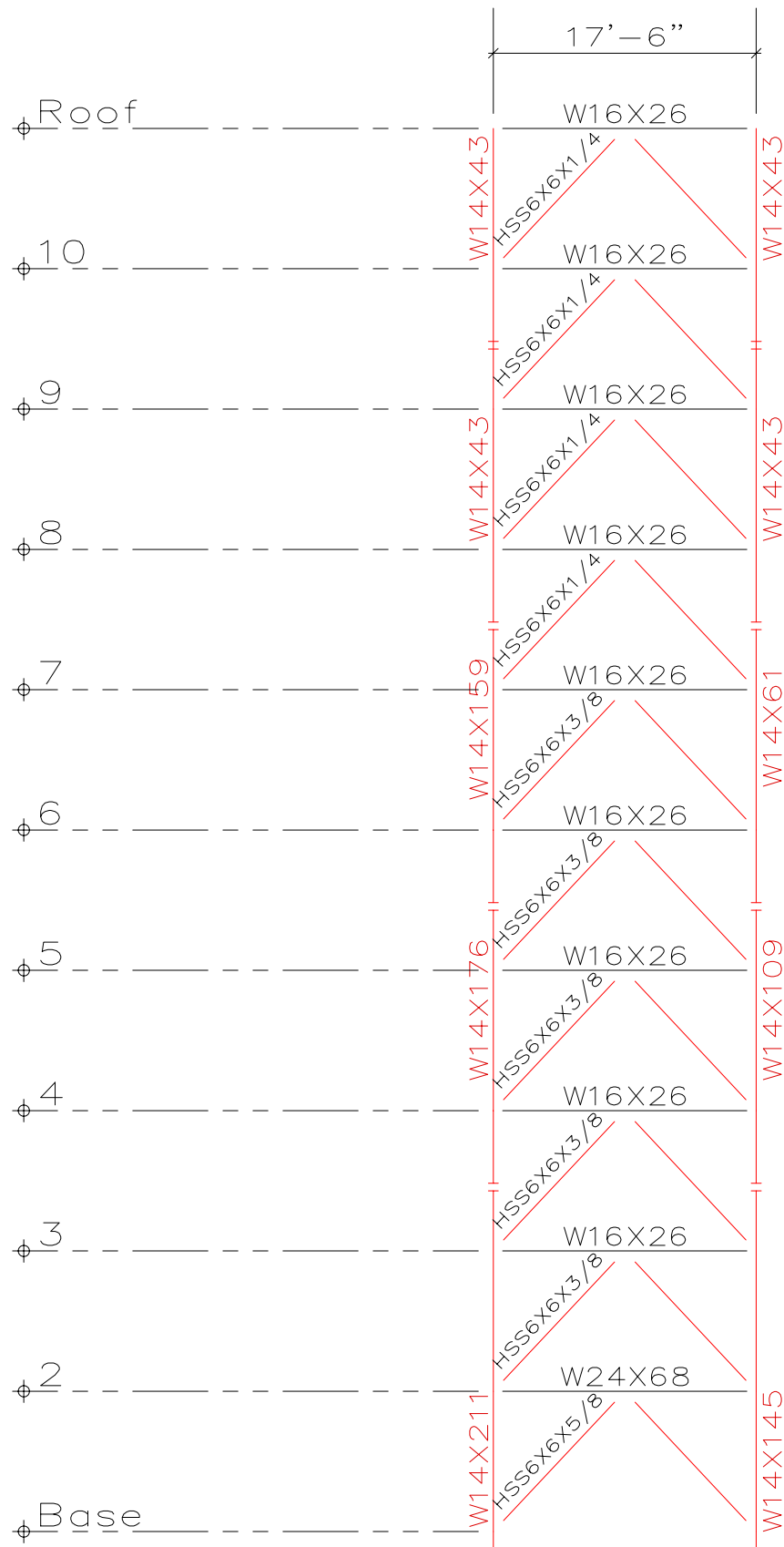


FRAME #5
 SCALE: 1/8" = 1'

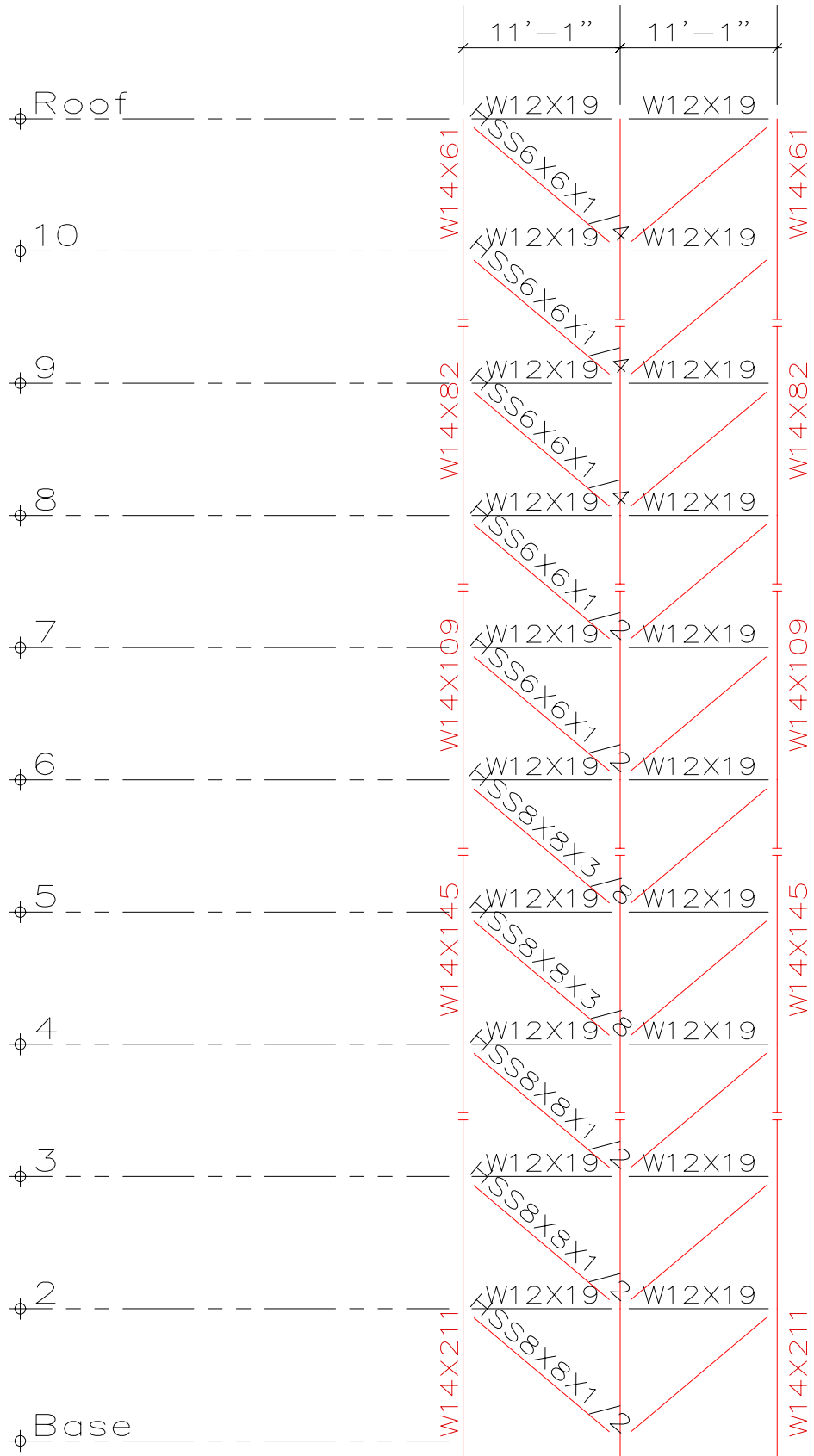


FRAME #4

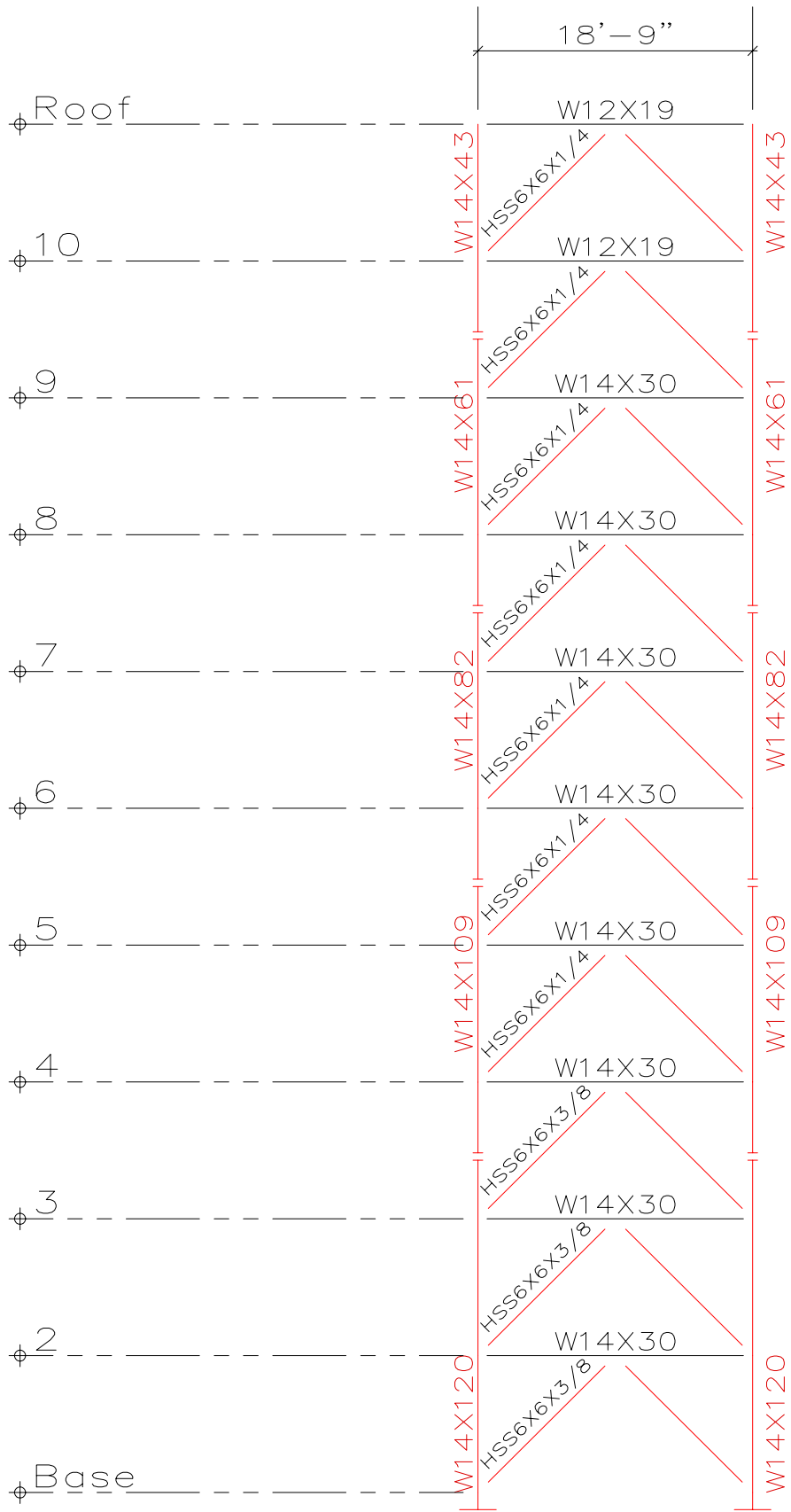
SCALE: 1/8" = 1'



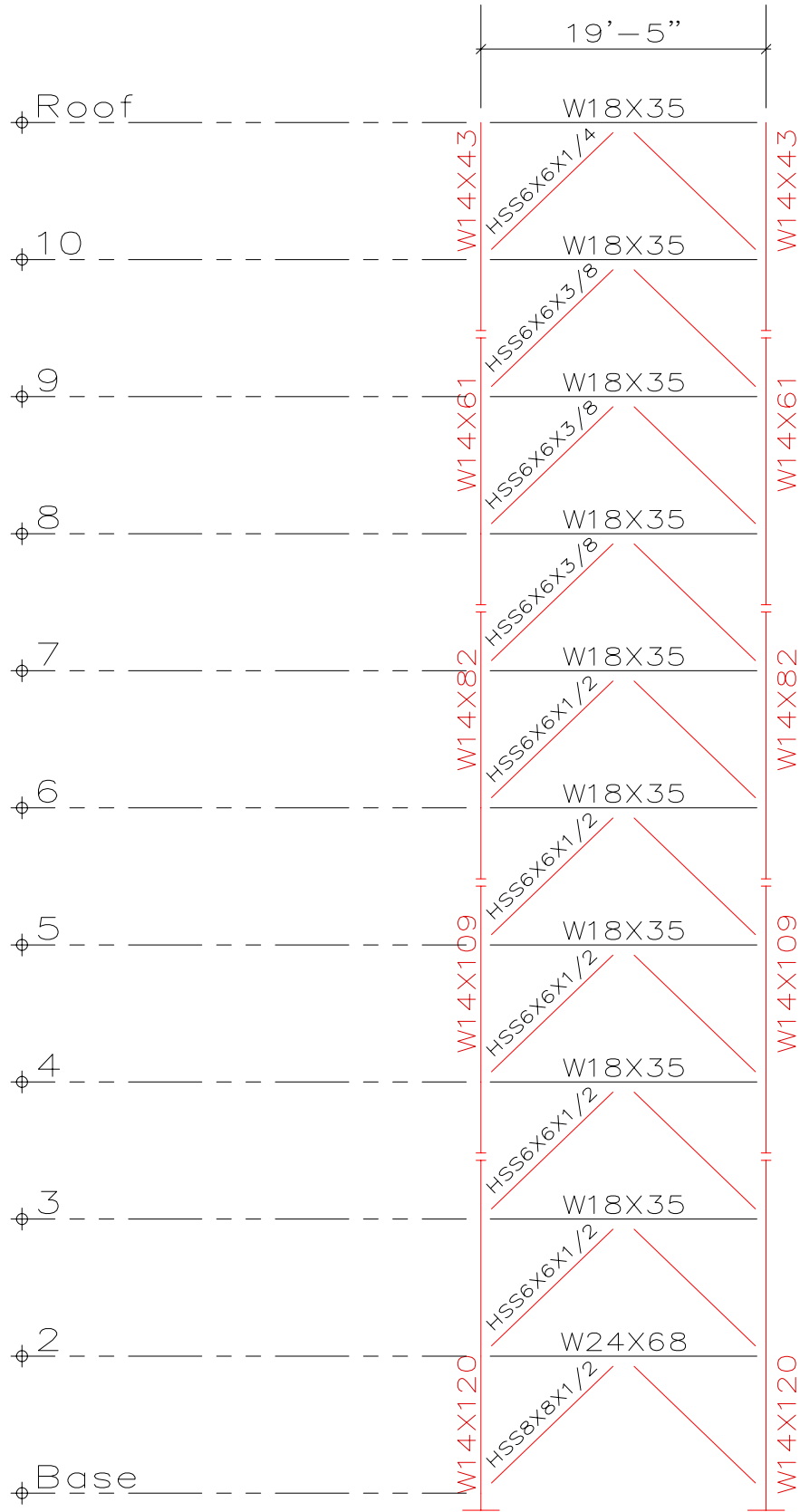
FRAME #2
 SCALE: 1/8" = 1'



FRAME #1
 SCALE: 1/8" = 1'



FRAME #7
 SCALE: 1/8" = 1'



FRAME #3

SCALE: 1/8" = 1'