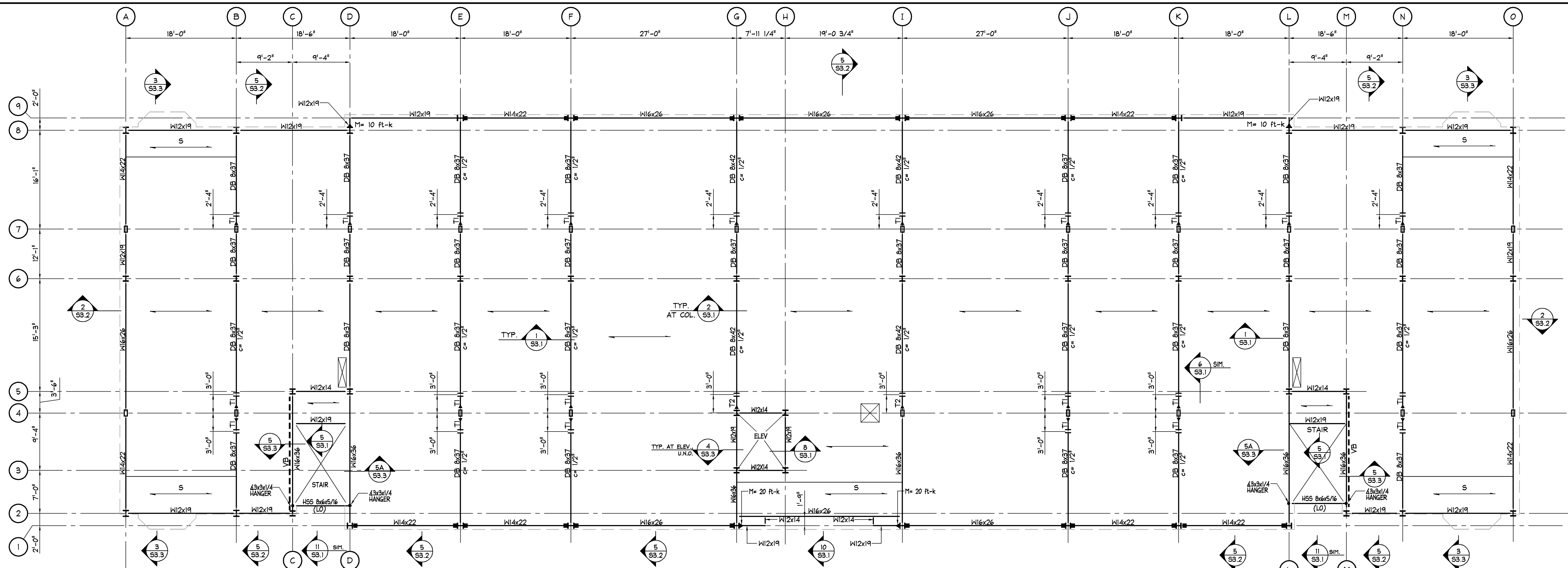


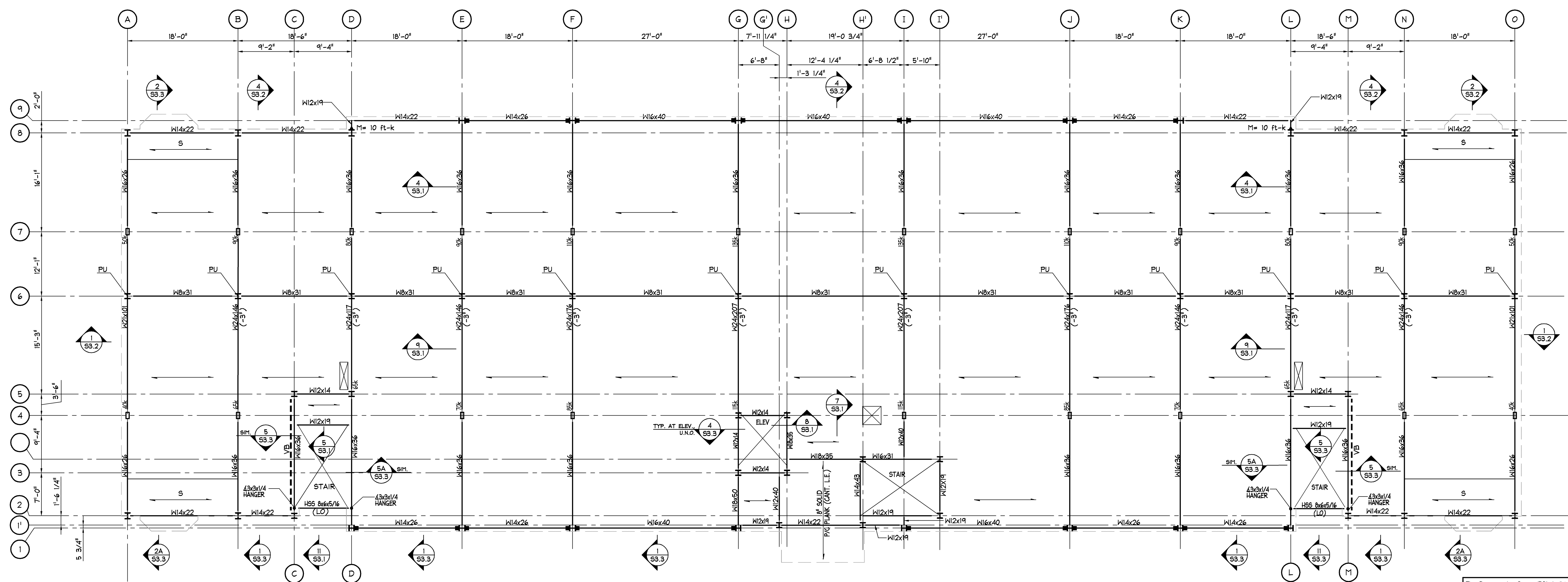
855 424 7880 Tel
888 478 1100 Toll Free
855 424 6880 Fax
www.girder-slab.com



2nd FLOOR FRAMING PLAN
SCALE: 1/8" = 1'-0"

- NOTES:
- 1) TOP OF PLANK ELEVATION = +1'-0"
 - 2) TOP OF WF STEEL (-8") FROM T.O. PLANK, U.N.O.
 - 3) "DB" INDICATES DISYMMETRIC BEAM (GRADE 50 STEEL), SEE SCHEDULE S3.1.
 - 4) "S" INDICATES SPAN DIRECTION OF 8" PRECAST PRESTRESSED HOLLOW CORE SLAB.
 - 5) "VB" INDICATES FULL HEIGHT VERTICAL BRACING, SEE DRAWING S3.2.
 - 6) "L" INDICATES LATERAL MOMENT CONNECTION, SEE DWG S3.2.
 - 7) "G" INDICATES GRAVITY MOMENT CONNECTION.
 - 8) "TC" INDICATES TREE COLUMN, SEE SCHEDULE ON DWG. S3.1.
 - 9) "C" INDICATES THE AMOUNT OF UPWARD MILL CAMBER TO BE PROVIDED.
 - 10) TOP OF DB (-9/16") FROM FIN. FLOOR, U.N.O.
 - 11) "S" INDICATES SPAN DIRECTION OF 8" SOLID PRESTRESSED PLANK.
 - 12) SEE ARCH./MECH DRAWINGS FOR FLOOR OPNG. LOCATIONS.

The Girder-Slab system and D-Beam Girders shall be distributed and assembled by steel contractors authorized by Girder-Slab Technologies, LLC of NJ in conformance with its Design-Guide and Distribution requirements. Steel Contractor/Distributor contact information: 1-888-478-1100 or www.girder-slab.com



1st FLOOR FRAMING PLAN
SCALE: 1/8" = 1'-0"

- NOTES:
- 1) TOP OF PLANK ELEVATION +1'-0"
 - 2) TOP OF WF STEEL (-8") FROM T.O. PLANK U.N.O.
 - 3) "S" INDICATES SPAN DIRECTION OF 8" PRECAST PRESTRESSED HOLLOW CORE SLAB.
 - 4) "VB" INDICATES FULL HEIGHT VERTICAL BRACING, SEE DRAWING S3.2.
 - 5) "L" INDICATES LATERAL MOMENT CONNECTION, SEE DRAWING S3.2.
 - 6) "G" INDICATES GRAVITY MOMENT CONNECTION.
 - 7) "PU" INDICATES W8x26 POST-UP W/ 3/4"x8" 1'-2" & (4) 3/4" ABS BOLTS.
 - 8) "S" INDICATES SPAN DIRECTION OF 8" SOLID PRESTRESSED PLANK.
 - 9) "SR" INDICATES UNFACTORED SERVICE LOAD REACTION AT TRANSFER GIRDER.
 - 10) SEE ARCH./MECH/PLUMBING DRAWINGS FOR FLOOR OPNG. LOCATIONS.

The Disymmetric Beam (DB) shall be fabricated, constructed and assembled in strict accordance with the specifications, detail and license requirements of Girder-Slab Technologies, LLC. The GIRDER-SLAB™ system is available from authorized independent contractors. Girder-Slab Technologies, LLC, PO Box 426, Cherry Hill, NJ 08034 WEB: www.girder-slab.com

The schematic information and associated details contained herein have been prepared by Girder-Slab Technologies, LLC to demonstrate the use and application of the GIRDER-SLAB™ system in conjunction with a structural steel frame superstructure for residential class projects. The complementary information is the property of Girder-Slab Technologies, LLC and may not be altered, copied or used for any other project or purpose without the express written consent of Girder-Slab Technologies, LLC.

This information is not intended for use as design or construction documents. The steel frame and precast slab design incorporating the use of the GIRDER-SLAB™ system inclusive of the D-BEAM™ shall be prepared by a licensed independent structural engineer in accordance with all GIRDER-SLAB™ system and D-BEAM™ specifications, details and requirements.

Revisions	
No.	Description

Project
THE DUEVELLE

Drawing FRAMING PLANS	Scale AS NOTED	Job 131.032LV	Sheet S12
Drawn	Date		1 of 1