

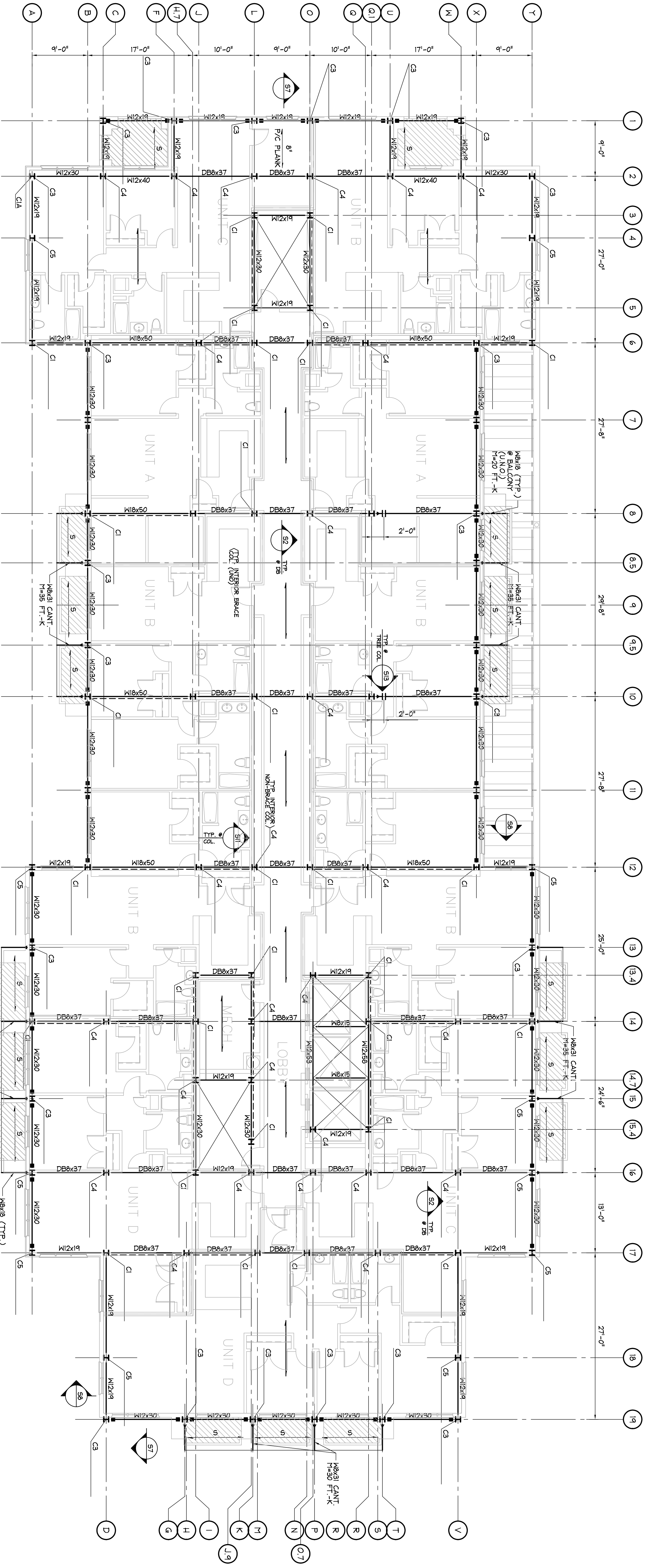
P.O. Box 4126
1205 Matthews Road
Clemmons, NC 27004
866 424 7860 Toll Free
866 424 6880 Fax
www.girder-slab.com

PROTECTED UNDER U.S. PATENTS & TRADEMARKS

The schematic information and associated details contained herein have been prepared by Girder-Slab Technologies, LLC to demonstrate the use and application of the GIRDER-SLAB™ system in conjunction with a structural steel frame superstructure for residential class projects. This complimentary information is the property of Girder-Slab Technologies, LLC and may not be altered, copied or used for any other project or purpose without the express written consent of Girder-Slab Technologies, LLC. This information is not intended for use as design or construction documents. The steel frame and precast slab design incorporating the use of the GIRDER-SLAB™ system inclusive of the D-BEAM™ shall be prepared by a licensed independent structural engineer in accordance with all GIRDER-SLAB™ system and D-BEAM™ specifications, details and requirements.

Project
17 Story Luxury Apartments w/ Four Elevators of Parking

Drawing Typical Floor Framing Plan	Scale AS NOTED	Job AS NOTED	Sheet PS-10
Drawn T.R.H.	Date 7/8/03		



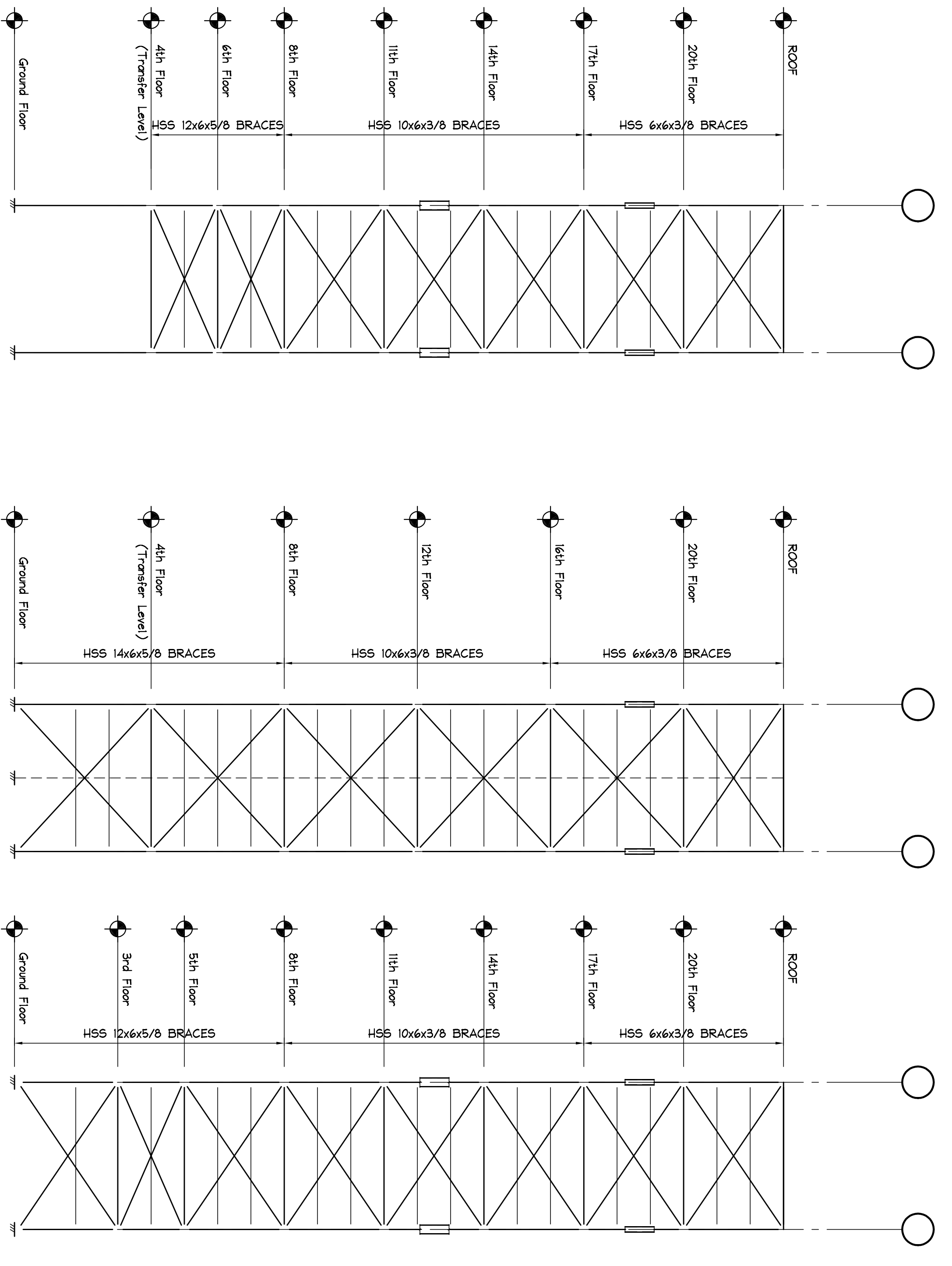
TYPICAL GIRDER-SLAB™ FRAMING PLAN
SCALE: 1/8" = 1'-0"

- NOTE: 1) INDICATES DYSYMMETRIC BEAM (DB) (GRADE 50 STEEL)
2) TOP OF DB (-41/6) FROM FIN. FLR. U.N.O.
3) TOP OF WF STEEL (-43) FROM FIN. FLR. U.N.O.
4) INDICATES SPAN DIRECTION OF 8' PRECAST PRESSURED HOLLOW CORE SLAB.
5) INDICATES SPAN DIRECTION OF 8' SOLID SLAB.
6) INDICATES GRAVITY MOMENT CONNECTION.
7) INDICATES MIND MOMENT CONNECTION.
8) INDICATES FULL HEIGHT VERTICAL CROSS BRACING.
9) REFERS TO TYPICAL SECTIONS IN THE GIRDER-SLAB SYSTEM DESIGN GUIDE.

COLUMN SCHEDULE

MARK	SIZE (x30)	# PIPs	CAP SIZE	REINFORCING
C1	W14x211 Gnd. to 8th, W14x194 8th to 15th, W14x20 15th to Roof	4	8'-6" x 8'-6" x 4'-6"	(2) #4 EMB (6) #4 LMB
C2	W12x170 Gnd. to Roof	2	8'-6" x 4'-0" x 4'-0"	(2) #4 SMB (6) #4 LMB
C3	W12x170 Gnd. to 8th, W12x120 8th to 15th, W12x74 15th to Roof	2	8'-6" x 4'-0" x 4'-0"	(2) #4 SMB (6) #4 LMB
C4	W12x132 Gnd. to 8th, W12x65 8th to 15th, W12x74 15th to Roof	2	8'-6" x 4'-0" x 4'-0"	(2) #4 SMB (6) #4 LMB
C5	W12x132 Gnd. to 8th, W12x65 8th to 15th, W12x50 15th to Roof	3	4'-0" x 4'-0" x 2'-0"	(3) #4 EMB
C6	W12x60 TYPICAL GARAGE EXTERIOR COLUMN	1	4'-0" x 4'-0" x 2'-0"	(3) #4 EMB
C7	W12x65 TYPICAL GARAGE INTERIOR COLUMN	1	4'-0" x 4'-0" x 2'-0"	(3) #4 EMB

NOTE: PIP INDICATES PRESSURE INJECTED FOOTING, 22% SOAK DOWN, 40K UPLIFT, 40K LATERAL



BRACE FRAME ELEVATION
@ LINES 6, 8, 10, 12 & 14
NOTE: INTERMEDIATE COLUMNS NOT SHOWN.

BRACE FRAME ELEVATION
@ LINE 17

BRACE FRAME ELEVATION
@ LINES 9, 11, 13, 15 & 17
NOTE: INTERMEDIATE COLUMNS NOT SHOWN.